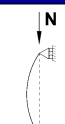


TECHNICAL DATA

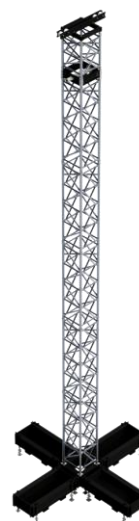
Vertical truss:	S85A
Maximum tower height:	24 m
Maximum lifting load capacity :	9000 kg
Compatibility (<i>with suitable sleeve block</i>):	ASTROroof system
Base dimensions (<i>without ballast</i>):	132 x 132 cm
Lifting system:	Electric chain hoist

The calculation at the base of the load table has been prepared in accordance with the UNI EN 1999-1-1.
 The allowable loads are net of the weight of the truss .
 The constraints must be considered as an ideal condition; It will be the customer's responsibility analyze the structure in the light of the actual conditions of load, constraint and use.

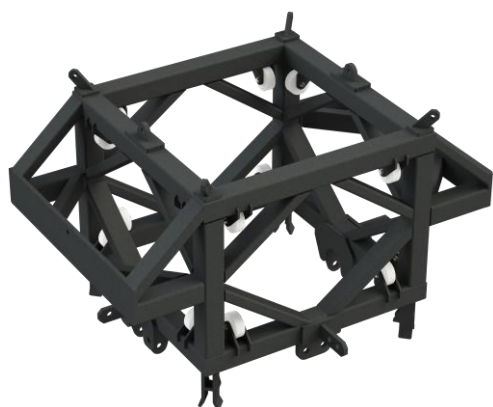
AXIAL ALLOWABLE LOAD



H [m]	N _{am} [kg]
9	19400
10	19300
11	19200
12	19200
13	18900
14	17800
15	16800
16	15700
17	14700
18	13800
19	12900
20	12100
21	11300
22	10500
23	9900
24	9200



Tower with demountable aluminum truss S85A for ASTROroof structure
Torre con traliccio scomponibile in alluminio S85A per struttura ASTROroof

ASTROtower COMPONENTS

**CX85S
Sleeve block**

Steel sleeve block with:

- mechanical safety lock system that secures the block from drop and lift when used in conjunction with **BCX85S** Safety Block;
- Support for single or double chain hoist;
- Connection for **ASTROroof** system.

Weight **510 kg**


**BCX85S
Safety block**

Mechanical locking system for use with CX85S sleeve block with telescopic tube and an easily accessible lever mechanism.

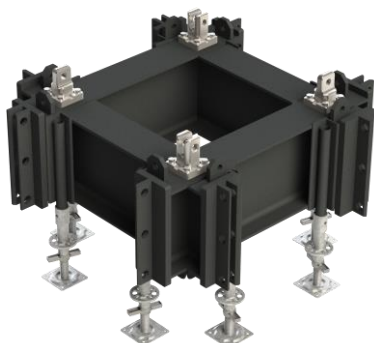
Weight **188 kg**


**TTS85A
Tower Top**

Steel tower top usable with single or double chain hoist.

Load capacity **5000 kg**

Weight **153 kg**


**BS85A
Tower base**

Steel tower base with adjustable feet and, in addition, function of:

- Ballast;
- A connecting element to the ballast/stabilizer on four orthogonal directions;
- Connection node between towers (through ballast elements);
- Attachment points for tension wires.

Weight **590 kg**

Tower with demountable aluminum truss S85A for ASTROroof structure
Torre con traliccio scomponibile in alluminio S85A per struttura ASTROroof

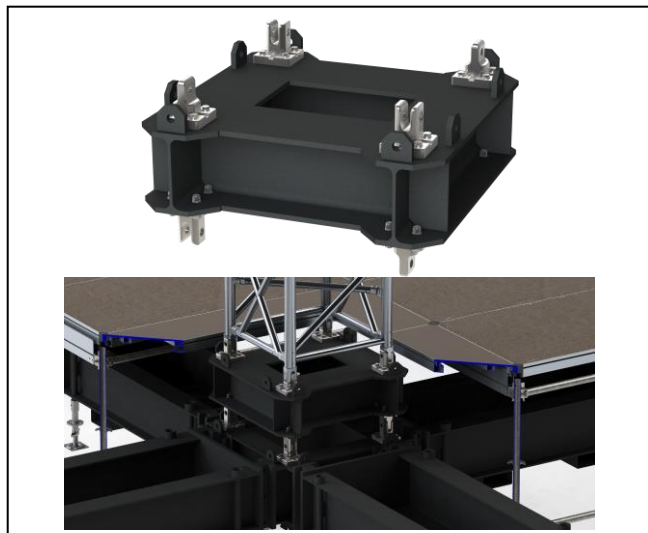
ASTROtower ACCESSORIES

**CBS85A
Ballast & tower stabilizer**

Steel modular element with function of:

- Tower stabilizer:
 - o Extension of tower base
 - o Tower connection element
- Ballast:
 - o Ballast for self-weight
 - o Tank for ballast water
 - o Support base for additional concrete ballast

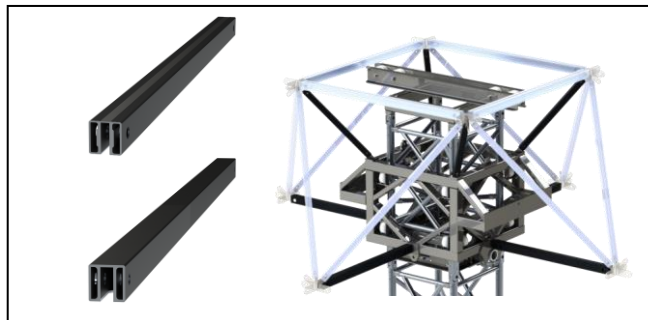
Code	Length L [cm]	Self- weight [kg]	Water capacity [l] / [kg]	Tot. weight [kg]
CBS85A/207	207	670	500	1170
CBS85A/290	290	860	700	1560
CBS85A/311	311	900	750	1650


**SBS85A
Base elevation element**

Steel modular element for increasing the height of base and to bring out, on the stage deck level, the tension wires attachment points.

More modules can be overlapped with 50 cm height increments: this feature makes the SCBS85A ideal for stages made with multi-directional scaffolding system of different heights.

Weight **410 kg**


**C80CX-AR
Chord element**

Chord element for connection Sleeve-block to the **ASTROroof** structure.

**D60CX-AR
Diagonal element**

Diagonal element for connection Sleeve-block to the **ASTROroof** structure.