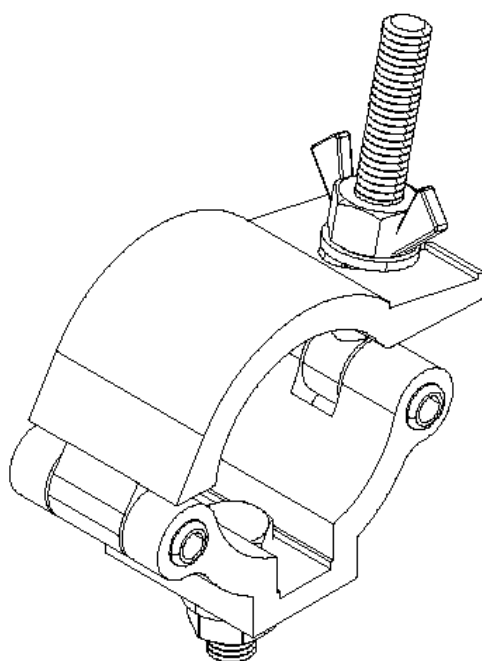


MANUALE D'USO

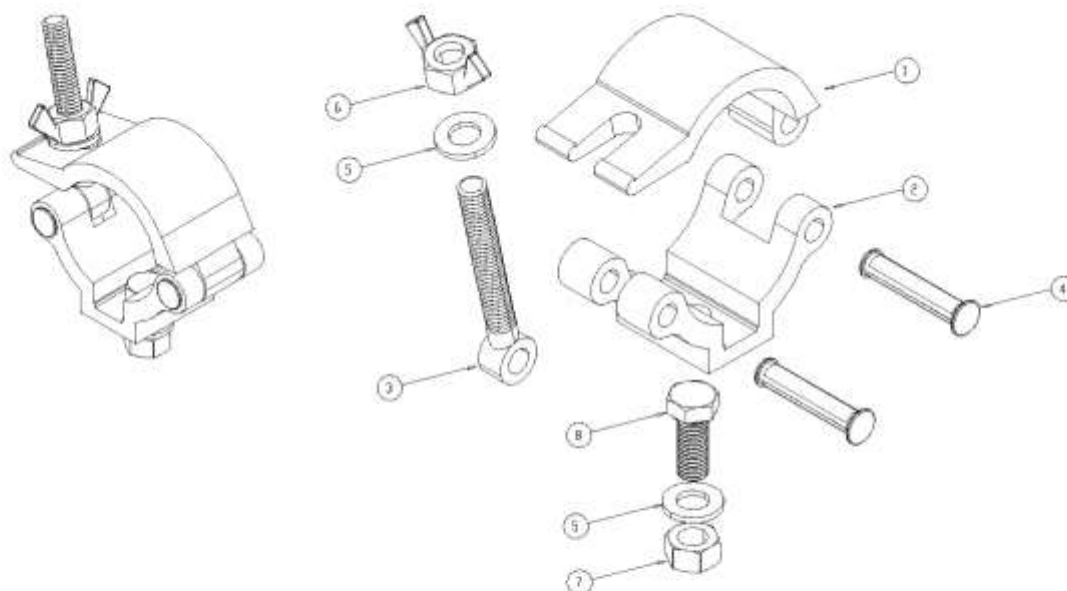
AS01/60*
AS01/60N**
GANCIO SINGOLO IN ALLUMINIO
COMPATIBILE TUBO DIAMETRO 60 mm
PORTATA 500 KG



Finitura verniciato argento() o verniciato nero(**)*

CE

ASSEMBLAGGIO ACCESSORI



Numero	Codice	Descrizione	Quantità
1	AS01/60-Concavo*	Parte concava verniciata silver	1
	AS01-60-Concavo**	Parte concava verniciata nera	
2	AS01/60-Convesso*	Parte convessa verniciata silver	1
	AS01/60-Convesso**	Parte convessa verniciata nera	
3	DC/F11-95	Occhiello filettato M12, lunghezza totale 95mm	1
4	RJ054	Ribattino semiforato Ø10x54mm, zincato testa piatta.	2
5	RD12	Rondella Øint 12mm	2
6	DAL12	Dado ad aletta zincato Ø12	1
7	D12	Dado esagonale M12	2
8	B1230/EZ	Bullone testa esagonale M12x30mm, zincato	1

AS01/60* - GANCIO SINGOLO SILVER FINISH
 AS01/60N** - GANCIO SINGOLO VERNICIATO NERO



PRESCRIZIONI DI UTILIZZO E ISTRUZIONI DI MONTAGGIO

Prescrizioni per l'utilizzo:

1. Non superare il carico di lavoro indicato nella scheda tecnica;
2. Utilizzare il gancio esclusivamente entro i parametri del tubo di progetto;
3. Ispezionare visivamente il gancio prima dell'uso. In caso di danneggiamento mettere fuori servizio;
4. Combinati con altri accessori, prestare attenzione a non superare la portata minima di qualsiasi componente;
5. Il gancio va utilizzato solo in un orientamento verticale (Fig.1). In caso contrario ridurre li carico;

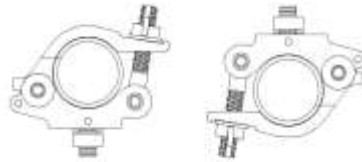


Figura 1 Configurazione di lavoro.

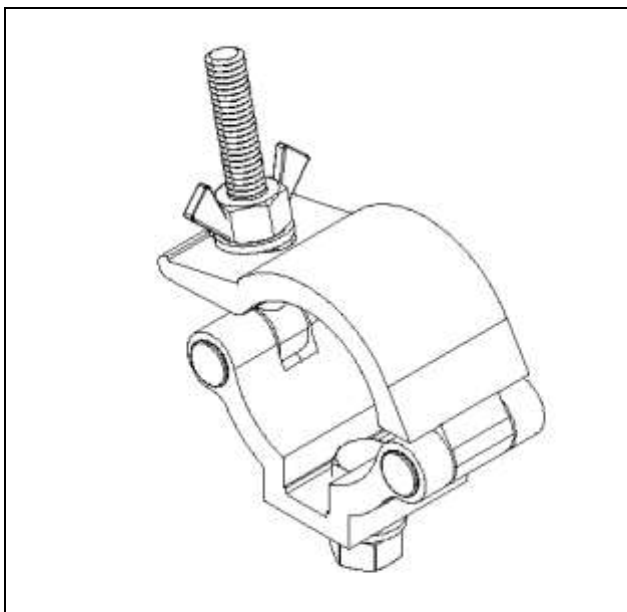
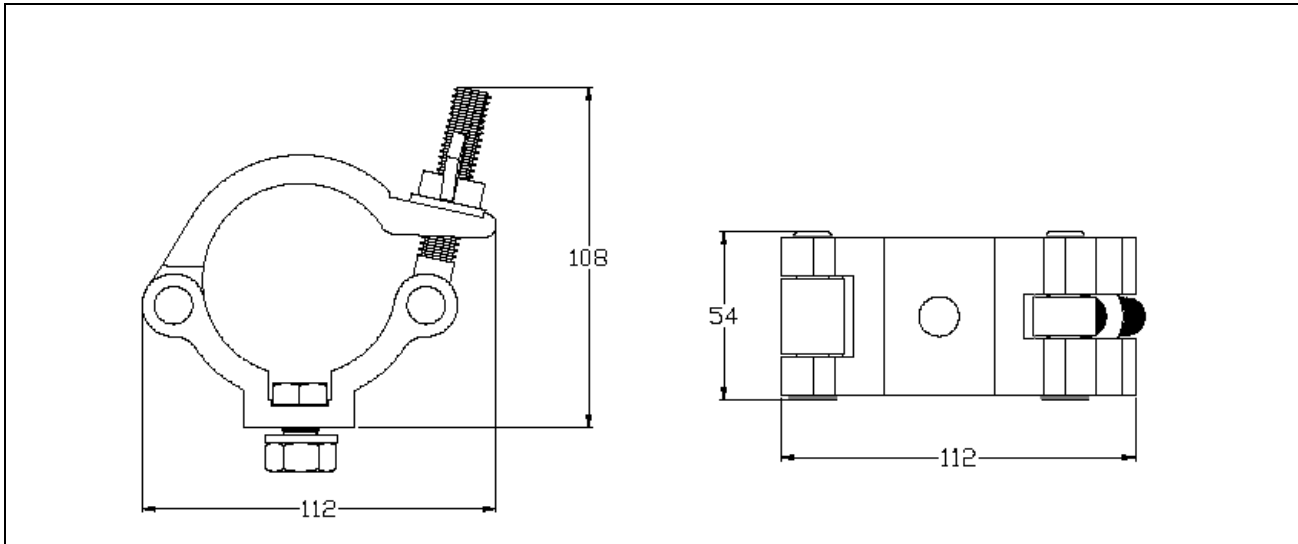
6. Per un corretto utilizzo applicare al dispositivo di serraggio su tubo un momento torcente pari a 32 Nm.

Istruzioni di montaggio:

[Per le istruzioni di montaggio e per ulteriori chiarimenti si rimanda al sito www.efestoproduction.com alla sezione **Ganci**.](http://www.efestoproduction.com)



SCHEDA TECNICA



Scheda Tecnica / Datasheet

Dimensioni / Dimensions
115x108x54 mm

Materiale / Material
EN AW 6060-T5

Finitura superficiale / Surface finish
*Verniciato argento / painted silver
**Verniciato nero / Painted black

Peso / Weight
0.410 kg

Volume trasporto / Transport volume
0.00070 m³

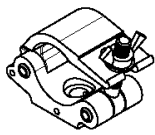
Portata / Max. load
500kg

Note / Notes
Sezione tubo (Pipe section) – 60 mm



SERIE GANCI

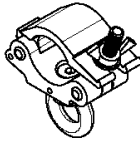
Si riportano, di seguito, la serie di ganci prodotti, disponibili in alluminio lucido o verniciato nero:



AS01



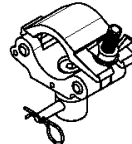
AS01S



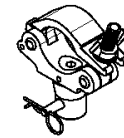
AG04



AG04S



AM02



AM02S



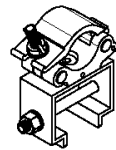
AS01/60



AS01/60G



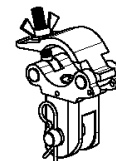
AS01/60M02



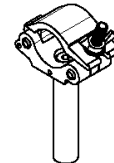
AS01/GCS



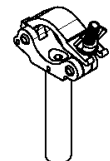
AS01/ST5050



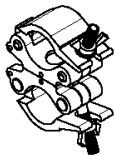
AS01/SU5050



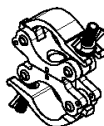
AS28



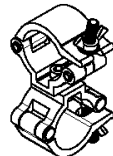
AS28S



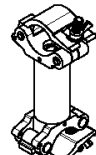
AD03



AD03S



AD03/60



B/AS01



GC/01



GC/01A



GC/01AG



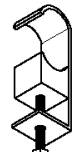
GC/01AM02



GC/01S



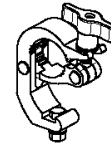
GC/01V



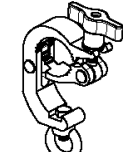
GC/02



GC/02A



GC/03A



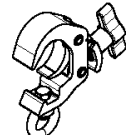
GC/03AG



GC/03AM02



GC/04A



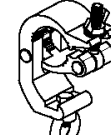
GC/04AG



GC/04AM02



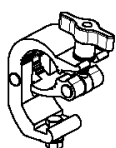
GC/05A



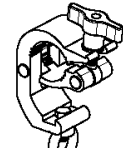
GC/05AG



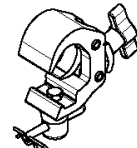
GC/05AM02



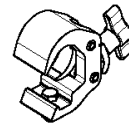
GC/06A



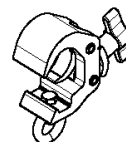
GC/06AG



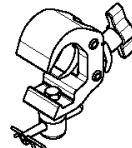
GC/06AM02



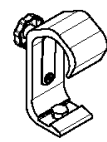
GC/07A



GC/07AG



GC/07AM02



GC/08A

