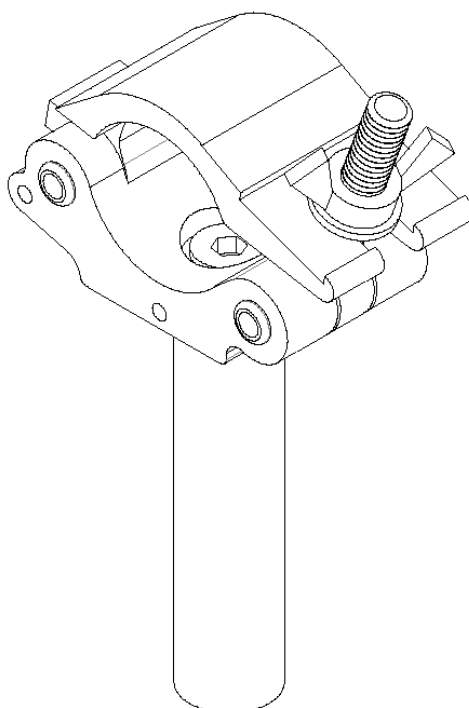
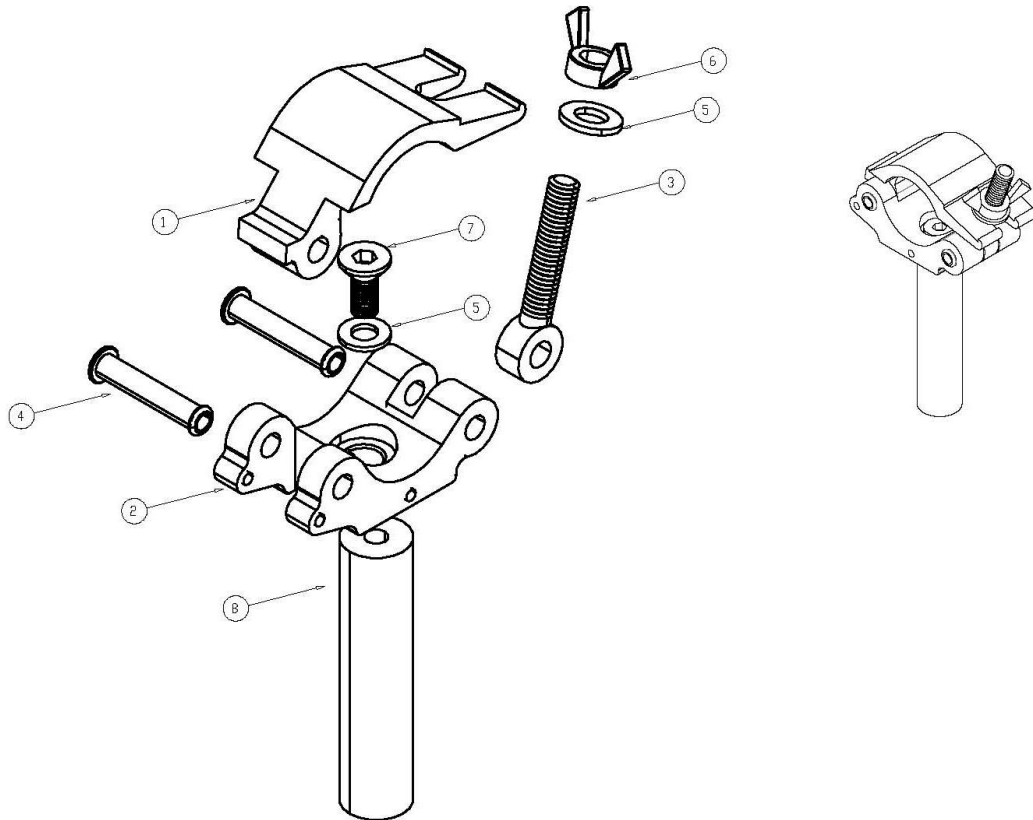


**AS28**  
GANCIO SINGOLO IN ALLUMINIO CON SPINOTTO LUNG. 120 mm Ø28 mm  
COMPATIBILE TUBO DIAMETRO DA 48 A 51 mm  
PORTATA 450 KG



## ASSEMBLAGGIO ACCESSORI



Numero	Codice	Descrizione	Quantità
1	AS01* -Concavo	Parte concava verniciata silver	1
2	AS01*-Convesso	Parte convessa verniciata Silver	1
3	DC/F11-95	Occhiello filettato M12, lunghezza totale 95mm	1
4	R1054	Ribattino semiforato Ø10x54mm, zincato testa piatta	2
5	RD12	Rondella Øint 12mm	1
6	DAL12	Dado ad aletta zincato Ø12	1
7	B1225/SPEI	Bullone testa svasata M12x25mm, zincato	1
8	S28/12M10	Spinotto in acciaio L.120 mm diam.28 mm con fori M10	1

AS28 - GANCIO CON SPINOTTO LUNGHEZZA 120 mm FORO DIAM. 28



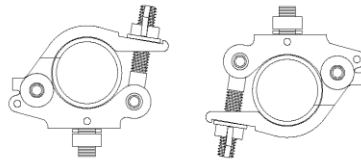
## PRESCRIZIONI DI UTILIZZO E ISTRUZIONI DI MONTAGGIO

---

---

### Prescrizioni per l'utilizzo:

1. Non superare il carico di lavoro indicato nella scheda tecnica;
2. Utilizzare il gancio esclusivamente entro i parametri del tubo di progetto;
3. Ispezionare visivamente il gancio prima dell'uso. In caso di danneggiamento mettere fuori servizio;
4. Combinati con altri accessori, prestare attenzione a non superare la portata minima di qualsiasi componente;
5. Il gancio va utilizzato solo in un orientamento verticale (Fig.1). In caso contrario ridurre li carico;



**Figura 1 Configurazione di lavoro.**

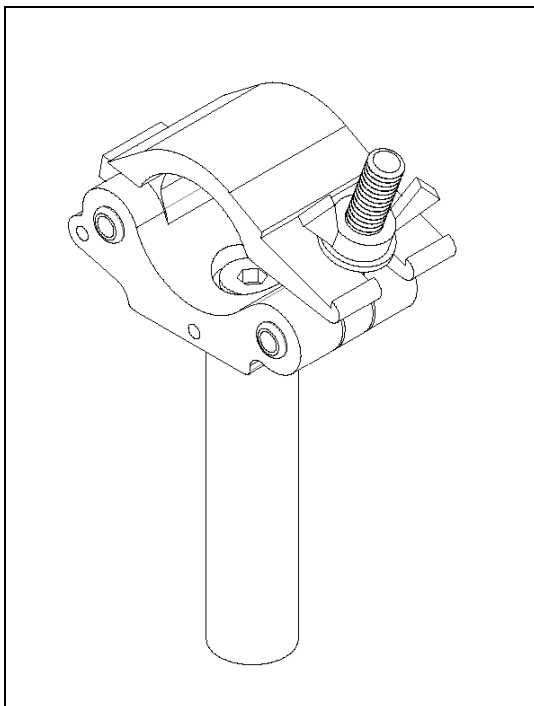
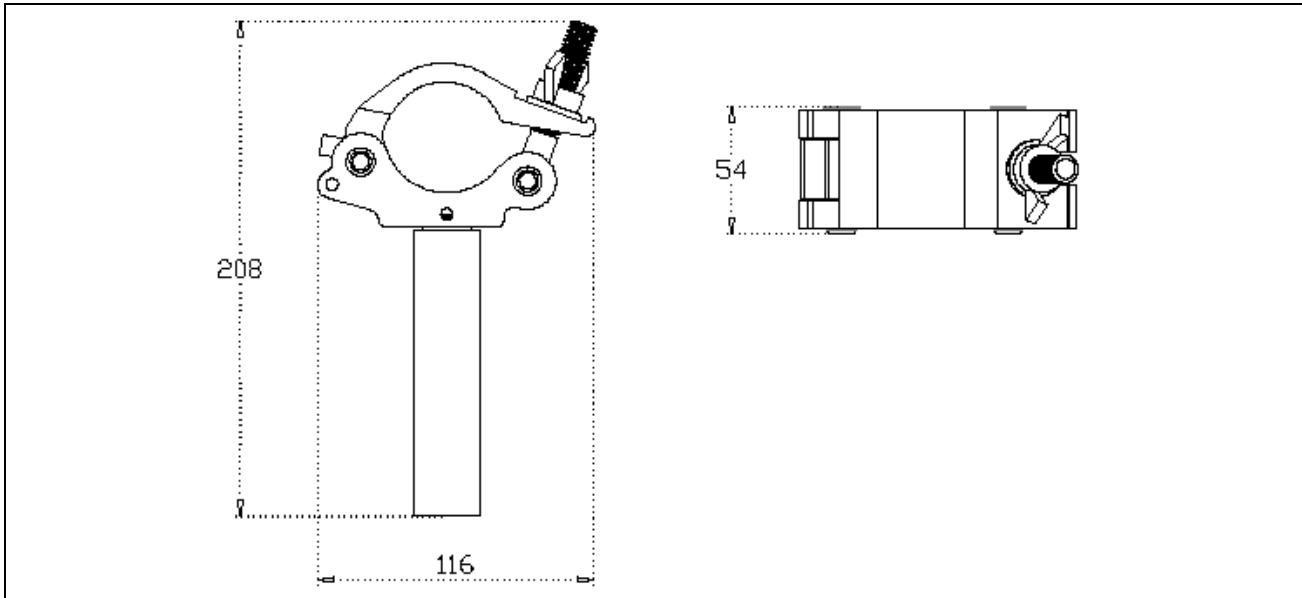
6. Per un corretto utilizzo applicare al dispositivo di serraggio su tubo un momento torcente pari a 32 Nm.

### Istruzioni di montaggio:

[Per le istruzioni di montaggio e per ulteriori chiarimenti si rimanda al sito \[www.efestoproduction.com\]\(http://www.efestoproduction.com\) alla sezione \*\*Ganci\*\*.](http://www.efestoproduction.com)



## SCHEDA TECNICA



## Scheda Tecnica / Datasheet

**Dimensioni / Dimensions**

208x116x54 mm

**Materiale / Material**

EN AW 6060-T5

**Finitura superficiale / Surface finish**

Verniciato argento / Painted silver

**Peso / Weight**

0.450 kg

**Volume trasporto / Transport volume**

 0.00130 m<sup>3</sup>
**Portata / Max. load**

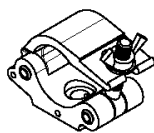
450kg

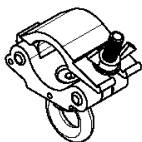
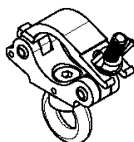
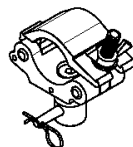
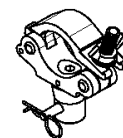
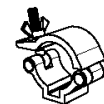
**Note / Notes**

 Min. sezione tubo (*Min. pipe section*) – 48 mm  
 Max. sezione tubo (*Max. pipe section*) – 51 mm

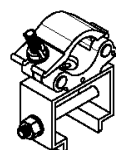

**SERIE GANCI**

Si riportano, di seguito, la serie di ganci prodotti, disponibili in alluminio verniciato argento o verniciato nero:

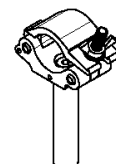
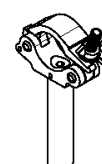
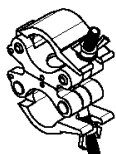

**AS01**

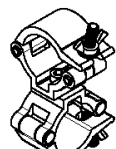
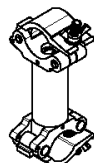
**AS01S**

**AG04**

**AG04S**

**AM02**

**AM02S**

**AS01/60**

**AS01/60G**

**AS01/60M02**

**AS01/GCS**

**AS01/ST5050**

**AS01/SU5050**

**AS28**

**AS28S**

**AD03**

**AD03S**

**AD03/60**

**B/AS01**

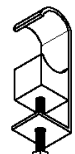
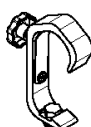
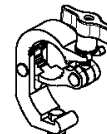
**GC/01**

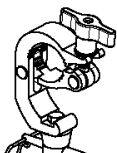
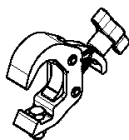
**GC/01A**

**GC/01AG**

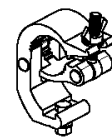
**GC/01AM02**

**GC/01S**

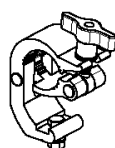
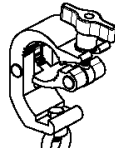
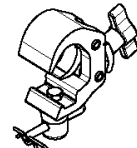
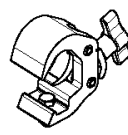
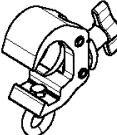
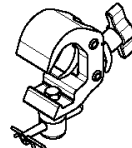
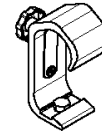
**GC/01V**

**GC/02**

**GC/02A**

**GC/03A**

**GC/03AG**

**GC/03AM02**

**GC/04A**

**GC/04AG**

**GC/04AM02**

**GC/05A**

**GC/05AG**

**GC/05AM02**

**GC/06A**

**GC/06AG**

**GC/06AM02**

**GC/07A**

**GC/07AG**

**GC/07AM02**

**GC/08A**
